

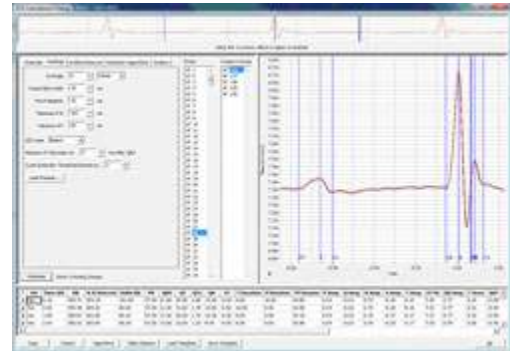


For Immediate Release

iWorx Introduces Plug-In ECG Analysis Software Module

Dover, NH, April 16, 2010 – [iWorx](#), a developer of advanced physiology research and teaching tools, has added a plug-in ECG analysis software module to its suite of systems, components and software for advanced [cardiovascular research](#). The [LabScribe2 ECG Software Module](#) automates the analysis of ECG data from a variety of animal species and provides a comprehensive set of pre-configured routines to simplify data interpretation and analysis. Specific analysis templates are included to accurately delineate PQRST onset, durations and amplitudes. Custom templates can also be created based on unique ECG profiles and saved to a library for future use.

The LabScribe2 ECG Module includes a comprehensive list of 24 calculations including R-R, PR, QT, QR and QTc intervals, QRS, T, P and TP durations, P, Q, R, S, T amplitudes and ST elevation. Other features include beat averaging, beat classification and outlier removal based on abnormal R-R intervals, heart rate, noise and activity, Poincaré plots and scattergrams, and the ability easily extract source data and average data as images or text files.



The iWorx LabScribe2 ECG Software Module is plug and play compatible with all iWorx Data Acquisition and Analysis Systems. The software can display up to 128 channels of data simultaneously at sampling rates as high as 100,000 samples/second. A separate [ASCII Text Import Module](#) is available that enables import of ECG data in text format that was recorded by any other acquisition program.

iWorx [cardiovascular research solutions](#) include complete tissue baths systems, blood flow systems, and myograph systems. A wide range of transducers, amplifiers, signal conditioners, multi-channel data recorders and accessories can be used for in situ experiments, isolated heart preparations and isolated tissue protocols. Additional LabScribe2 software modules are available to analyze pressure signals, blood flow data, ventricular pressure-volume loops and sonomicrometry dimension data.

More information on iWorx cardiovascular research solutions can be found at www.iworx.com. For more information, contact iWorx Systems, Inc., One Washington Street, Suite 404, Dover, NH 03820 (T) (800) 234-1757, (F) (603) 742-2455, billm@iworx.com.

[Download high resolution screen image here.](#)

About iWorx

iWorx advanced research solutions include high performance recording hardware, software, and components that accelerate metabolic, cardiovascular, neuromuscular and respiratory physiology research. In addition to data acquisition systems, iWorx offers a full selection of signal conditioners, stimulators, transducers, electrodes, cables, and general-purpose laboratory equipment and accessories.

Media Contacts:**Bill Mitchell**billm@iworx.com

603-742-2492/(800) 234-1757

Tom Riccitom@riccicomunications.com

401-354-2360